



To the product video

BRIEF INFORMATION

90 mm LED module R 80

- Specially developed reflector design for homogeneous illumination
- Compact and robust design
- Enables cost-effective replacement of halogen to LED headlamps

PRODUCT FEATURES

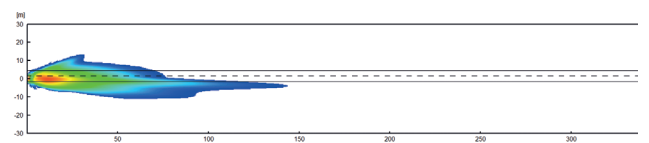
The new R 80 modules combine the advantages of LED lighting with a cost-efficient design and can be used for a wide variety of vehicle types. The modules for conversions from halogen to LED are particularly interesting.

The R 80 has an innovative reflector design that provides a particularly homogeneous illumination that neither distracts nor tires the driver. The LED lighting also increases safety, especially in comparison to halogen headlights. Thanks to the high colour temperature of the LEDs, the illumination appears more like daylight and the driver sees much better and does not tire so quickly. Driving comfort increases.

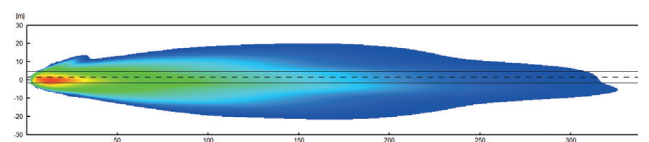
The R 80 LED headlamps offer a long, maintenance-free service life and reduce operating costs compared to conventional halogen products, even in vehicles with low usage.

The robust design with aluminium heat sink and impact-resistant polycarbonate lens allows for the use in harsh environments and under maximum demands.

ILLUMINATION



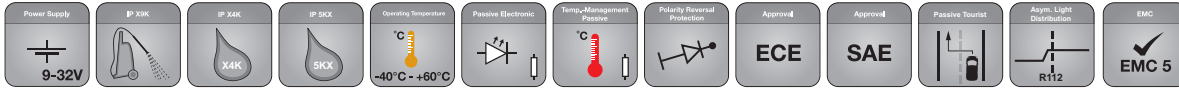
Low beam



Combined high and low beam



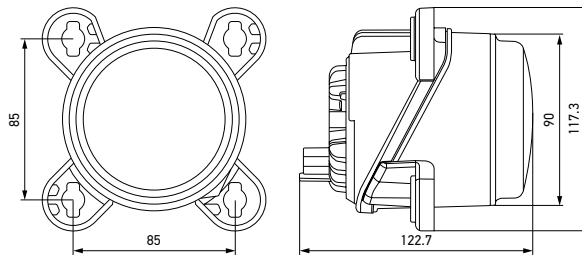
TECHNICAL DETAILS





Technical data

Rated voltage	9 – 32 Volt
Lighting functions	Low beam and high beam
Light source	LED
Weight	445 g
Temperature range	-40°C to +60°C
Material	Cover lens: Polycarbonate Housing: plastic Reflector: plastic
Heat sink	Aluminium
Specification	HELLA Standard 67101: Class 3.2 / 4.1 / 7.2 / 10.2 / 11.2 / 12.1 / 13.2
Protection class	IP X9K, IP X4K, IP 5KX
Salt spray test	480 h (ISO 9227)
Type approval	ECE-R112; SAE (FMVSS-108)
Connector	2-pole DT06-2S / 2-pole FEP 1J0973702

Dimensional sketch



PROGRAM OVERVIEW

Product image	Description	Connector	Part number
LED low beam headlamp R 80*			
	Right-hand traffic, ECE	DEUTSCH connector	1BL 015 050-001
	Right-hand traffic, SAE	DEUTSCH connector	1BL 015 050-031
	Left-hand traffic, ECE	DEUTSCH connector	1ML 015 050-011
	Right-hand traffic, ECE	FEP connector	1BL 015 050-101
	Right-hand traffic, SAE	FEP connector	1BL 015 050-131
	Left-hand traffic, ECE	FEP connector	1ML 015 050-111
LED high beam headlamp R 80*			
	-	DEUTSCH connector	1K0 015 050-021
	-	FEP connector	1K0 015 050-121

* Mounting set 254 163-00 not included.